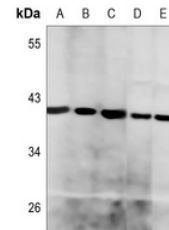


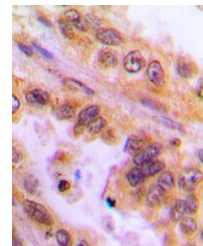
Product Datasheet

Histone Deacetylase 8 antibody (orb256589)

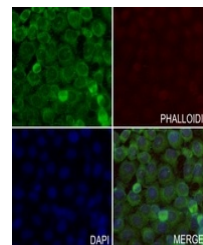
Description	Rabbit polyclonal antibody to Histone Deacetylase 8
Species/Host	Rabbit
Reactivity	Human, Mouse, Primate, Rat
Conjugation	Unconjugated
Tested Applications	IF, IH, WB
Immunogen	KLH-conjugated synthetic peptide encompassing a sequence within the N-term region of human Histone Deacetylase 8. The exact sequence is proprietary.
Target	HDAC8
Preservatives	Liquid in 0.42% Potassium phosphate, 0.87% Sodium chloride, pH 7.3, 30% glycerol, and 0.01% sodium azide.
Form/Appearance	Liquid in 0.42% Potassium phosphate, 0.87% Sodium chloride, pH 7.3, 30% glycerol, and 0.01% sodium azide.
Storage	Maintain refrigerated at 2-8°C for up to 2 weeks. For long term storage store at -20°C in small aliquots to prevent freeze-thaw cycles.
Note	For research use only
Clonality	Polyclonal
Source	Rabbit
Uniprot ID	Q9BY41 , B1WC68 , Q8VH37
Entrez	70315 , 363481 , 100911968 , 55869
Dilution Range	WB: 1:500-1000, IHC-P: 1:100-200
Expiration Date	12 months from date of receipt.



Western blot analysis of Histone Deacetylase 8 antibody



Immunohistochemical analysis of Histone Deacetylase 8 antibody



Immunofluorescent analysis of Histone Deacetylase 8 antibody