
Product Datasheet

Histone Deacetylase 6 (phospho-S22) antibody (orb256587)

Description

Rabbit polyclonal antibody to Histone

Species/Host

Rabbit

Reactivity

Human, Primate

Conjugation

Unconjugated

Tested Applications

IF, IH, WB

Immunogen

KLH-conjugated synthetic phosphopeptide corresponding to residues surrounding S22 of human Histone Deacetylase 6 protein. The exact sequence is proprietary.

Target

HDAC6

Preservatives

Liquid in 0.42% Potassium phosphate, 0.87% Sodium chloride, pH 7.3, 30% glycerol, and 0.01% sodium azide.

Form/Appearance

Liquid in 0.42% Potassium phosphate, 0.87% Sodium chloride, pH 7.3, 30% glycerol, and 0.01% sodium azide.

Storage

Maintain refrigerated at 2-8°C for up to 2 weeks. For long term storage store at -20°C in small aliquots to prevent freeze-thaw cycles.

Note

For research use only

Clonality

Polyclonal

Source

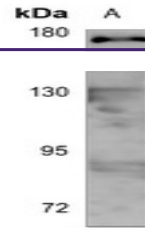
Rabbit

Uniprot ID
[Q9UBN7](#), [Q9Z2V5](#)
Entrez
[10013](#), [15185](#)
Dilution Range

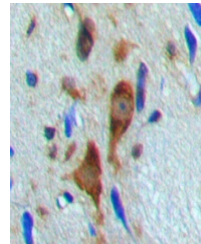
WB: 1:500-1000, IHC-P: 1:100-200, IF/ICC: 1:100-500

Expiration Date

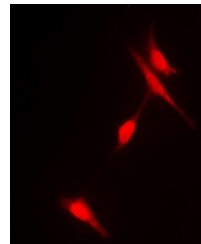
12 months from date of receipt.



Western blot analysis of Histone Deacetylase 6 protein.



Immunohistochemical analysis of Histone Deacetylase 6 protein.



Immunofluorescent analysis of Histone Deacetylase 6 protein.