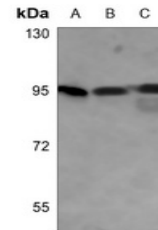


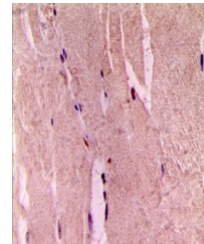
Product Datasheet

GYS1 (phospho-S645) antibody (orb256578)

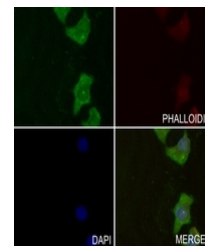
Description	Rabbit polyclonal antibody to GYS1 (phospho-S645)
Species/Host	Rabbit
Reactivity	Human, Mouse, Porcine, Rabbit, Rat
Conjugation	Unconjugated
Tested Applications	IF, IH, WB
Immunogen	KLH-conjugated synthetic phosphopeptide corresponding to residues surrounding S645 of human GYS1 protein. The exact sequence is proprietary.
Target	GYS1
Preservatives	Liquid in 0.42% Potassium phosphate, 0.87% Sodium chloride, pH 7.3, 30% glycerol, and 0.01% sodium azide.
Form/Appearance	Liquid in 0.42% Potassium phosphate, 0.87% Sodium chloride, pH 7.3, 30% glycerol, and 0.01% sodium azide.
Storage	Maintain refrigerated at 2-8°C for up to 2 weeks. For long term storage store at -20°C in small aliquots to prevent freeze-thaw cycles.
Note	For research use only
Clonality	Polyclonal
Source	Rabbit
Uniprot ID	Q9Z1E4 , P13807 , A2RRU1
Entrez	2997 , 690987 , 14936
Dilution Range	WB: 1:500-1000, IHC-P: 1:100-200
Expiration Date	12 months from date of receipt.



Western blot analysis of GYS1 (Phospho-S645)



Immunohistochemical analysis of GYS1 (Phospho-S645)



Immunofluorescent analysis of GYS1 (Phospho-S645)