
Product Datasheet

Connexin 43 (phospho-S368) antibody (orb256558)

Description

Rabbit polyclonal antibody to Connexin 43

Species/Host

Rabbit

Reactivity

Human, Mouse, Rat

Conjugation

Unconjugated

Tested Applications

IH, WB

Immunogen

KLH-conjugated synthetic phosphopeptide corresponding to residues surrounding S368 of human Connexin 43 protein. The exact sequence is proprietary.

Target

GJA1

Preservatives

Liquid in 0.42% Potassium phosphate, 0.87% Sodium chloride, pH 7.3, 30% glycerol, and 0.01% sodium azide.

Form/Appearance

Liquid in 0.42% Potassium phosphate, 0.87% Sodium chloride, pH 7.3, 30% glycerol, and 0.01% sodium azide.

Storage

Maintain refrigerated at 2-8°C for up to 2 weeks. For long term storage store at -20°C in small aliquots to prevent freeze-thaw cycles.

Note

For research use only

Clonality

Polyclonal

Source

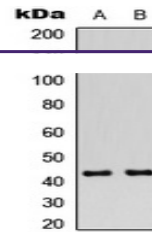
Rabbit

Uniprot ID
[P08050](#), [P17302](#), [P23242](#)
Entrez
[24392](#), [14609](#), [2697](#)
Dilution Range

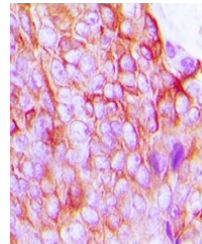
WB: 1:500-1000, IHC-P: 1:100-200

Expiration Date

12 months from date of receipt.



Western blot analysis of Connexin 43 (Ph...



Immunohistochemical analysis of Connexin...