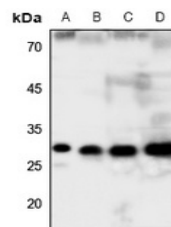


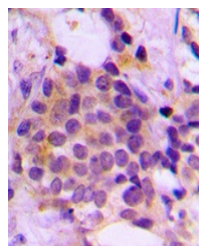
Product Datasheet

GCLM antibody (orb256556)

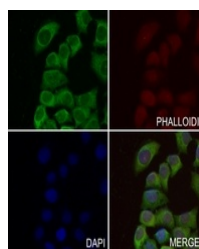
Description	Rabbit polyclonal antibody to GCLM
Species/Host	Rabbit
Reactivity	Human, Mouse, Rat
Conjugation	Unconjugated
Tested Applications	IF, IH, WB
Immunogen	KLH-conjugated synthetic peptide encompassing a sequence within the center region of human GCLM. The exact sequence is proprietary.
Target	GCLM
Preservatives	Liquid in 0.42% Potassium phosphate, 0.87% Sodium chloride, pH 7.3, 30% glycerol, and 0.01% sodium azide.
Form/Appearance	Liquid in 0.42% Potassium phosphate, 0.87% Sodium chloride, pH 7.3, 30% glycerol, and 0.01% sodium azide.
Storage	Maintain refrigerated at 2-8°C for up to 2 weeks. For long term storage store at -20°C in small aliquots to prevent freeze-thaw cycles.
Note	For research use only
Clonality	Polyclonal
Source	Rabbit
Uniprot ID	O09172 , P48507 , P48508
Entrez	14630 , 2730 , 29739
Dilution Range	WB: 1:500-1000, IHC-P: 1:100-200
Expiration Date	12 months from date of receipt.



Western blot analysis of GCLM expression...



Immunohistochemical analysis of GCLM stain...



Immunofluorescent analysis of GCLM stain...