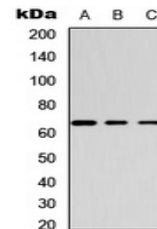


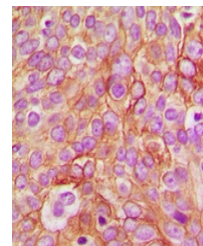
Product Datasheet

GABRB1 (phospho-S434) antibody (orb256547)

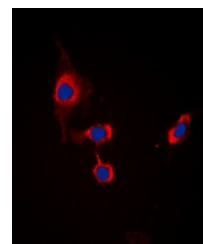
Description	Rabbit polyclonal antibody to GABRB1 (phospho-S434)
Species/Host	Rabbit
Reactivity	Human, Mouse, Rat
Conjugation	Unconjugated
Tested Applications	IF, IH, WB
Immunogen	KLH-conjugated synthetic phosphopeptide corresponding to residues surrounding S434 of human GABRB1 protein. The exact sequence is proprietary.
Target	GABRB1
Preservatives	Liquid in 0.42% Potassium phosphate, 0.87% Sodium chloride, pH 7.3, 30% glycerol, and 0.01% sodium azide.
Form/Appearance	Liquid in 0.42% Potassium phosphate, 0.87% Sodium chloride, pH 7.3, 30% glycerol, and 0.01% sodium azide.
Storage	Maintain refrigerated at 2-8°C for up to 2 weeks. For long term storage store at -20°C in small aliquots to prevent freeze-thaw cycles.
Note	For research use only
Clonality	Polyclonal
Source	Rabbit
Uniprot ID	P50571, P15431, P18505
Entrez	2560, 14400, 25450
Dilution Range	WB: 1:500-1000, IHC-P: 1:100-200, IF/ICC: 1:100-500
Expiration Date	12 months from date of receipt.



Western blot analysis of GABRB1 (Phospho-S434)



Immunohistochemical analysis of GABRB1 (Phospho-S434)



Immunofluorescent analysis of GABRB1 (Phospho-S434)