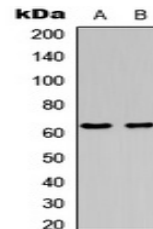


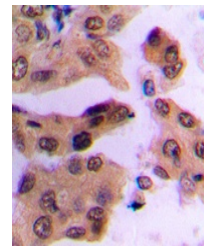
Product Datasheet

c-FOS (phospho-S362) antibody (orb256537)

Description	Rabbit polyclonal antibody to c-FOS (phospho-S362)
Species/Host	Rabbit
Reactivity	Human, Mouse, Porcine, Rat
Conjugation	Unconjugated
Tested Applications	FC, IH, WB
Immunogen	KLH-conjugated synthetic phosphopeptide corresponding to residues surrounding S362 of human c-FOS protein. The exact sequence is proprietary.
Target	FOS
Preservatives	Liquid in 0.42% Potassium phosphate, 0.87% Sodium chloride, pH 7.3, 30% glycerol, and 0.01% sodium azide.
Form/Appearance	Liquid in 0.42% Potassium phosphate, 0.87% Sodium chloride, pH 7.3, 30% glycerol, and 0.01% sodium azide.
Storage	Maintain refrigerated at 2-8°C for up to 2 weeks. For long term storage store at -20°C in small aliquots to prevent freeze-thaw cycles.
Note	For research use only
Clonality	Polyclonal
Source	Rabbit
Uniprot ID	P01100, P12841, P01101
Entrez	14281, 2353, 314322
Dilution Range	WB: 1:500-1000, IHC-P: 1:100-200, FC: 1:100-200
Expiration Date	12 months from date of receipt.



Western blot analysis of c-FOS (Phospho-S362) antibody.



Immunohistochemical analysis of c-FOS (Phospho-S362) antibody.