
Product Datasheet

Tissue Factor (phospho-S290) antibody (orb256529)

Description

Rabbit polyclonal antibody to Tissue Factor

Species/Host

Rabbit

Reactivity

Human, Mouse, Rat

Conjugation

Unconjugated

Tested Applications

IH, WB

Immunogen

KLH-conjugated synthetic phosphopeptide corresponding to residues surrounding S290 of human CD142 protein. The exact sequence is proprietary.

Target

F3

Preservatives

Liquid in 0.42% Potassium phosphate, 0.87% Sodium chloride, pH 7.3, 30% glycerol, and 0.01% sodium azide.

Form/Appearance

Liquid in 0.42% Potassium phosphate, 0.87% Sodium chloride, pH 7.3, 30% glycerol, and 0.01% sodium azide.

Storage

Maintain refrigerated at 2-8°C for up to 2 weeks. For long term storage store at -20°C in small aliquots to prevent freeze-thaw cycles.

Note

For research use only

Clonality

Polyclonal

Source

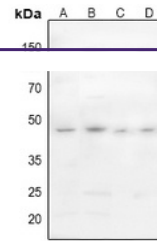
Rabbit

Uniprot ID
[P13726](#)
Entrez
[2152](#)
Dilution Range

WB: 1:500-1000

Expiration Date

12 months from date of receipt.



Western blot analysis of CD142 (Phospho-...)



Immunohistochemical analysis of CD142 (P...)