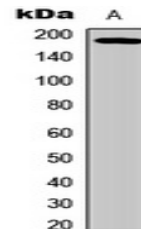


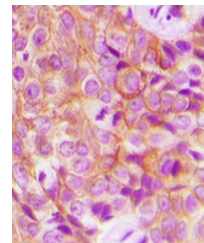
Product Datasheet

EGFR (phospho-T693) antibody (orb256507)

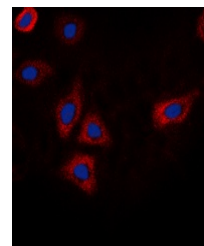
Description	Rabbit polyclonal antibody to EGFR (phospho-T693)
Species/Host	Rabbit
Reactivity	Human, Mouse, Porcine, Rat, Zebrafish
Conjugation	Unconjugated
Tested Applications	IF, IH, WB
Immunogen	KLH-conjugated synthetic phosphopeptide corresponding to residues surrounding T693 of human EGFR protein. The exact sequence is proprietary.
Target	EGFR
Preservatives	Liquid in 0.42% Potassium phosphate, 0.87% Sodium chloride, pH 7.3, 30% glycerol, and 0.01% sodium azide.
Form/Appearance	Liquid in 0.42% Potassium phosphate, 0.87% Sodium chloride, pH 7.3, 30% glycerol, and 0.01% sodium azide.
Storage	Maintain refrigerated at 2-8°C for up to 2 weeks. For long term storage store at -20°C in small aliquots to prevent freeze-thaw cycles.
Note	For research use only
Clonality	Polyclonal
Source	Rabbit
Uniprot ID	Q01279 , P00533
Entrez	1956 , 13649
Dilution Range	WB: 1:500-1000, IHC-P: 1:100-200, IF/ICC: 1:100-500
Expiration Date	12 months from date of receipt.



Western blot analysis of EGFR (Phospho-T693)



Immunohistochemical analysis of EGFR (Phospho-T693)



Immunofluorescent analysis of EGFR (Phospho-T693)