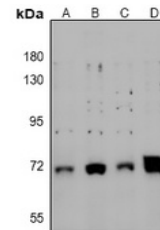


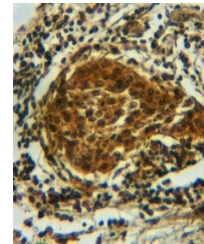
Product Datasheet

CRMP2 (phospho-S522) antibody (orb256499)

Description	Rabbit polyclonal antibody to CRMP2 (phospho-S522)
Species/Host	Rabbit
Reactivity	Human, Mouse, Porcine, Primate, Rat
Conjugation	Unconjugated
Tested Applications	IH, WB
Immunogen	KLH-conjugated synthetic phosphopeptide corresponding to residues surrounding S522 of human CRMP2 protein. The exact sequence is proprietary.
Target	DPYSL2
Preservatives	Liquid in 0.42% Potassium phosphate, 0.87% Sodium chloride, pH 7.3, 30% glycerol, and 0.01% sodium azide.
Form/Appearance	Liquid in 0.42% Potassium phosphate, 0.87% Sodium chloride, pH 7.3, 30% glycerol, and 0.01% sodium azide.
Storage	Maintain refrigerated at 2-8°C for up to 2 weeks. For long term storage store at -20°C in small aliquots to prevent freeze-thaw cycles.
Note	For research use only
Clonality	Polyclonal
Source	Rabbit
Uniprot ID	O08553 , P47942 , Q16555
Entrez	1808 , 25416 , 12934
Dilution Range	WB: 1:500-1000
Expiration Date	12 months from date of receipt.



Western blot analysis of CRMP2 (Phospho-S522) antibody.



Immunohistochemical analysis of CRMP2 (Phospho-S522) antibody.