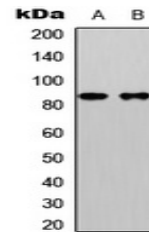


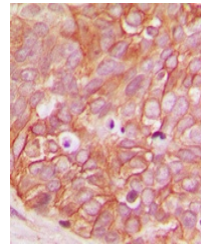
Product Datasheet

beta-catenin (phospho-S33) antibody (orb256482)

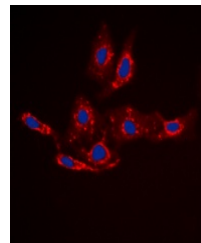
Description	Rabbit polyclonal antibody to beta-catenin (phospho-S33)
Species/Host	Rabbit
Reactivity	Human, Mouse, Porcine, Rabbit, Rat, Sheep
Conjugation	Unconjugated
Tested Applications	IF, IH, WB
Immunogen	KLH-conjugated synthetic phosphopeptide corresponding to residues surrounding S33 of human Beta-catenin protein. The exact sequence is proprietary.
Target	CTNNB1
Preservatives	Liquid in 0.42% Potassium phosphate, 0.87% Sodium chloride, pH 7.3, 30% glycerol, and 0.01% sodium azide.
Form/Appearance	Liquid in 0.42% Potassium phosphate, 0.87% Sodium chloride, pH 7.3, 30% glycerol, and 0.01% sodium azide.
Storage	Maintain refrigerated at 2-8°C for up to 2 weeks. For long term storage store at -20°C in small aliquots to prevent freeze-thaw cycles.
Note	For research use only
Clonality	Polyclonal
Source	Rabbit
Uniprot ID	Q9WU82 , Q02248 , P35222
Entrez	12387 , 84353 , 1499
Dilution Range	WB: 1:500-1000, IHC-P: 1:100-200, IF/ICC: 1:100-500
Expiration Date	12 months from date of receipt.



Western blot analysis of Beta-catenin (P...



Immunohistochemical analysis of Beta-cat...



Immunofluorescent analysis of Beta-caten...