

## Product Datasheet

### MIP3 beta antibody (orb256345)

**Description**

MIP3 beta antibody

**Species/Host**

Rabbit

**Reactivity**

Human, Mouse, Rat

**Conjugation**

Unconjugated

**Tested**

ELISA, ICC, IF, IHC-P

**Applications**
**Immunogen**

KLH conjugated synthetic peptide derived from human MIP3 beta. Please contact us for the exact immunogen sequence. The peptide is available as orb374878.

**Target**

MIP3 beta

**Form/Appearance**

10 mM PBS, 0.02% sodium azide

**Concentration**

- 100 µg (in 200 µl): 0.5 mg/ml- 200 µg (in 400 µl): 0.5 mg/ml

**Storage**

Maintain refrigerated at 2-8°C for up to 2 weeks. For long term storage store at -20°C in small aliquots to prevent freeze-thaw cycles.

**Note**

For research use only

**Isotype**

IgG

**Clonality**

Polyclonal

**Purity**

Polyclonal antibodies are purified by peptide affinity chromatography

**MW**

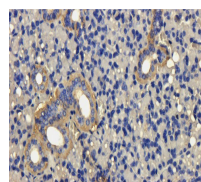
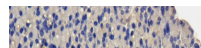
9.2 kDa

**Uniprot ID**
[Q99731](#), [D3ZI84](#), [O70460](#)
**NCBI**
[005064](#), [005055](#)
**Entrez**
[6363](#)
**Dilution Range**

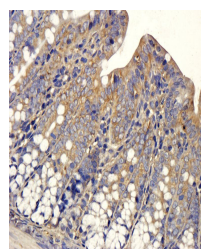
IF/ICC: 1:200, IHC-P: 1:200

**Expiration Date**

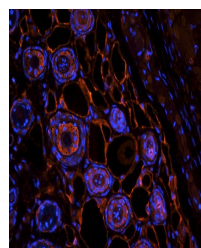
12 months from date of receipt.



IHC-P staining of mouse lymph node tissue...



Immunohistochemical staining of rat colo...



IF analysis of mouse skin tissue using a...