

---

## Product Datasheet

### MCP3 antibody (orb256344)

**Description**

MCP3 antibody

**Species/Host**

Rabbit

**Reactivity**

Human, Mouse, Porcine, Rat

**Conjugation**

Unconjugated

**Tested Applications**

ELISA, ICC, IF, IHC-P

**Immunogen**

KLH conjugated synthetic peptide derived from human MCP3. Please contact us for the exact immunogen sequence. The peptide is available as orb374877.

**Target**

MCP3

**Form/Appearance**

10 mM PBS, 0.02% sodium azide

**Concentration**

- 100 µg (in 200 µl): 0.5 mg/ml- 200 µg (in 400 µl): 0.5 mg/ml

**Storage**

After reconstitution store at 4°C.for up to two weeks. For long term storage, aliquot and store at -20°C. Avoid freeze/thaw cycles.

**Note**

For research use only

**Isotype**

IgG

**Clonality**

Polyclonal

**Purity**

Polyclonal antibodies are purified by peptide affinity chromatography

**MW**

11 kDa

**Uniprot ID**

[P80098](#), [Q9QXY8](#), [Q03366](#)

**NCBI**

[038682](#), [013654](#), [31](#), [11](#)

**Entrez**

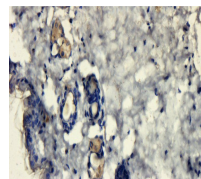
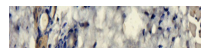
[20306](#)

**Dilution Range**

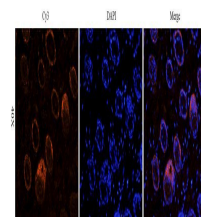
IF/ICC: 1:200, IHC-P: 1:200-500

**Expiration Date**

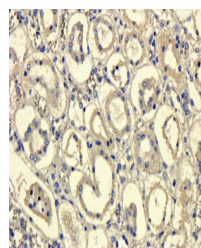
12 months from date of receipt.



Immunohistochemical staining of paraffin...



Immunofluorescence analysis of mouse skin...



IHC-P staining of pig kidney tissue usin...