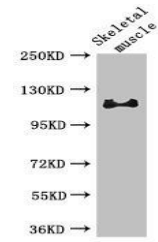


Product Datasheet

RBL1 antibody (orb25528)

Description	RBL1 antibody
Species/Host	Rabbit
Reactivity	Human, Mouse
Conjugation	Unconjugated
Tested Applications	ELISA, WB
Immunogen	Recombinant Human Retinoblastoma-like protein 1 protein (201-500AA)
Target	RBL1
Preservatives	Preservative: 0.03% Proclin 300. Constituents: 50% Glycerol
Form/Appearance	Liquid
Storage	Upon receipt, store at -20°C or -80°C. Avoid repeated freeze.
Note	For research use only
Isotype	IgG
Clonality	Polyclonal
Uniprot ID	P28749
Dilution Range	WB:1:2000-5000
Expiration Date	12 months from date of receipt.



Western blot analysis of Mouse skeletal ...