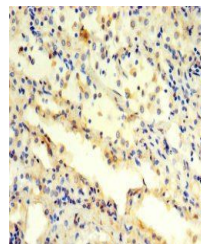


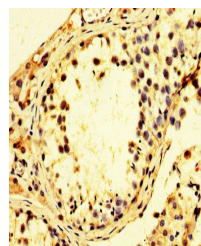
Product Datasheet

PSMC3 antibody (orb25457)

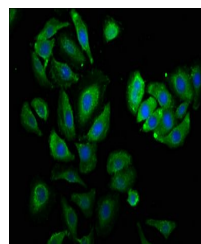
Description	PSMC3 antibody
Species/Host	Rabbit
Reactivity	Human
Conjugation	Unconjugated
Tested Applications	ELISA, IF, IHC
Immunogen	Recombinant Human 26S proteasome regulatory subunit 6A protein (1-300AA)
Target	PSMC3
Preservatives	Preservative: 0.03% Proclin 300. Constituents: 50% Glycerol
Form/Appearance	Liquid
Storage	Upon receipt, store at -20°C or -80°C. Avoid repeated freeze.
Note	For research use only
Isotype	IgG
Clonality	Polyclonal
Uniprot ID	P17980
Dilution Range	IHC-P:1:20-200, IF:1:500-1000
Expiration Date	12 months from date of receipt.



Immunohistochemical staining of human lu...



Immunohistochemical staining of human te...



Immunofluorescence analysis of A549 cell...