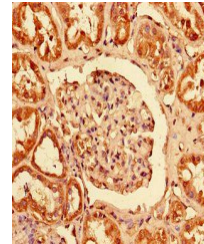


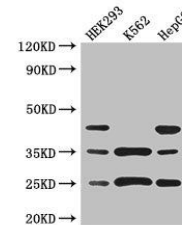
Product Datasheet

PCTP antibody (orb25302)

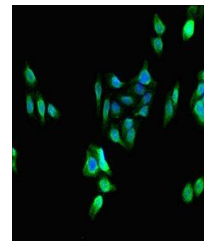
| | |
|----------------------------|--|
| Description | PCTP antibody |
| Species/Host | Rabbit |
| Reactivity | Human |
| Conjugation | Unconjugated |
| Tested Applications | ELISA, IF, IHC, WB |
| Immunogen | Recombinant Human Phosphatidylcholine transfer protein (1-214AA) |
| Target | PCTP |
| Preservatives | Preservative: 0.03% Proclin 300. Constituents: 50% Glycerol |
| Form/Appearance | Liquid |
| Storage | Upon receipt, store at -20°C or -80°C. Avoid repeated freeze. |
| Note | For research use only |
| Isotype | IgG |
| Clonality | Polyclonal |
| Uniprot ID | Q9UKL6 |
| Dilution Range | WB:1:500-5000, IHC-P:1:20-200, IF:1:50-200 |
| Expiration Date | 12 months from date of receipt. |



Immunohistochemistry of paraffin-embedde...



Western blot aanalysis of HEK293 whole c...



Immunofluorescent analysis of HepG2 cell...