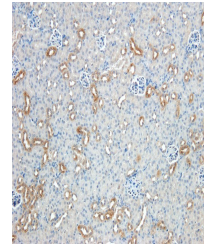


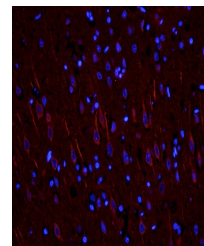
Product Datasheet

Nestin antibody (orb251614)

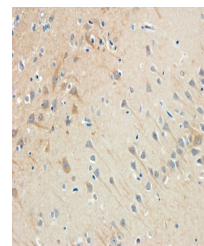
Description	Nestin antibody
Species/Host	Rabbit
Reactivity	Human, Mouse, Rat
Conjugation	Unconjugated
Tested Applications	ELISA, ICC, IF, IHC-P
Immunogen	KLH conjugated synthetic peptide derived from human Nestin. Please contact us for the exact immunogen sequence. The peptide is available as orb374873.
Target	Nestin
Form/Appearance	10 mM PBS, 0.02% sodium azide
Concentration	- 100 µg (in 200 µl): 0.5 mg/ml- 200 µg (in 400 µl): 0.5 mg/ml
Storage	Store at 4°C for up to two weeks. For long term storage, aliquot and store at -20°C, avoid freeze/thaw cycles.
Note	For research use only
Isotype	IgG
Clonality	Polyclonal
Purity	Polyclonal antibodies are purified by peptide affinity chromatography
MW	178 kDa
Uniprot ID	P48681
Entrez	10763
Dilution Range	IF/ICC: 1:200, IHC-P: 1:200
Expiration Date	12 months from date of receipt.



IHC-P staining of mouse kidney tissue us...



Immunofluorescence analysis of rat brain...



Immunohistochemical staining of rat brai...