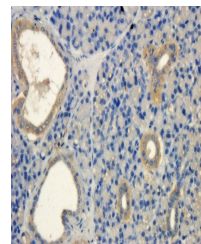


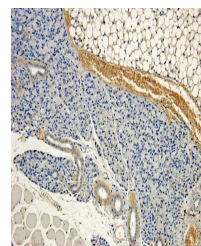
Product Datasheet

MCP5 antibody (orb251611)

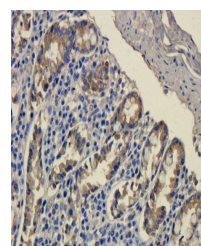
Description	MCP5 antibody
Species/Host	Rabbit
Reactivity	Human, Mouse, Porcine, Rat
Conjugation	Unconjugated
Tested Applications	ELISA, IHC-P
Immunogen	KLH conjugated synthetic peptide derived from mouse MCP5. Please contact us for the exact immunogen sequence. The peptide is available as orb374871.
Target	MCP5
Form/Appearance	10 mM PBS, 0.02% sodium azide
Concentration	- 100 µg (in 200 µl): 0.5 mg/ml- 200 µg (in 400 µl): 0.5 mg/ml
Storage	Store at 4°C for up to two weeks. For long term storage, aliquot and store at -20°C, avoid freeze/thaw cycles.
Note	For research use only
Isotype	IgG
Clonality	Polyclonal
Purity	Polyclonal antibodies are purified by peptide affinity chromatography
MW	12 kDa
Uniprot ID	Q62401
Entrez	100862578
Dilution Range	IHC-P: 1:200
Expiration Date	12 months from date of receipt.



IHC-P image of mouse lymph node tissue u...



Immunohistochemical staining of paraffin...



Immunohistochemical staining of pig smal...