

---

## Product Datasheet

### Integrin beta 1 antibody (orb251610)

**Description**

Integrin beta 1 antibody

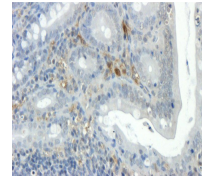


**Species/Host**

Rabbit

**Reactivity**

Bovine, Canine, Equine, Gallus, Human, Mouse, Porcine, Rat, Sheep



Immunohistochemical staining of paraffin...

**Conjugation**

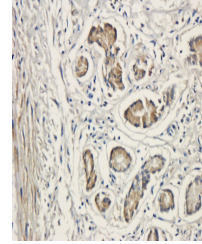
Unconjugated

**Tested Applications**

ELISA, ICC, IF, IHC-P

**Immunogen**

KLH conjugated synthetic peptide derived from human Integrin beta 1. Please contact us for the exact immunogen sequence. The peptide is available as orb374870.



Immunohistochemical staining of pig stom...

**Target**

Integrin beta 1

**Form/Appearance**

10 mM PBS, 0.02% sodium azide

**Concentration**

- 100 µg (in 200 µl): 0.5 mg/ml- 200 µg (in 400 µl): 0.5 mg/ml

**Storage**

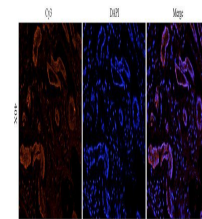
Store at 4°C for up to two weeks. For long term storage, aliquot and store at -20°C, avoid freeze/thaw cycles.

**Note**

For research use only

**Isotype**

IgG



Immunofluorescence image of pig stomach

**Clonality**

Polyclonal

**Purity**

Polyclonal antibodies are purified by peptide affinity chromatography

**MW**

88 kDa

**Uniprot ID**

[P05556](#), [P09055](#), [P49134](#)

**Entrez**

[3688](#)

**Dilution Range**

IF/ICC: 1:200, IHC-P: 1:200

**Expiration Date**

12 months from date of receipt.