
Product Datasheet

SF2/SRSF1 Antibody (orb251587)

Description

SF2/SRSF1 Antibody

Species/Host

Rabbit

Reactivity

Human, Mouse, Rat

Conjugation

Unconjugated

Tested Applications

IHC, WB

Immunogen

A synthetic peptide corresponding to a sequence at the N-terminus of Human SF2 (6-33aa VIRGPAGNDCRIYVGNLPPDIRTKDIE), identical to the related mouse sequence.

Form/Appearance

Lyophilized

Concentration

Adding 0.2 ml of distilled water will yield a concentration of 500 µg/ml.

Storage

Store at -20°C for one year from date of receipt. After reconstitution, at 4°C for one month. It can also be aliquotted and stored frozen at -20°C for six months. Avoid repeated freeze-thaw cycles.

Note

For research use only

Application notes

WB: The detection limit for SF2 is approximately 0.2ng/lane under reducing conditions. Tested Species: In-house tested species with positive results. By Heat: Boiling the paraffin sections in 10mM citrate buffer, pH6.0, for 20mins is required for the staining of formalin/paraffin sections. Other applications have not been tested. Optimal dilutions should be determined by end users. . Add 0.2ml of distilled water will yield a concentration of 500ug/ml.

Isotype

Rabbit IgG

Clonality

Polyclonal

MW

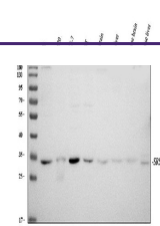
27745 MW

Uniprot ID
[Q07955](https://www.uniprot.org/entry/Q07955)
Sensitivity

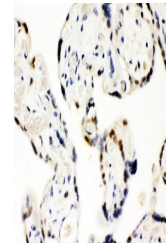
> 5000 cells

Expiration Date

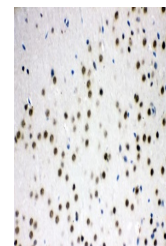
12 months from date of receipt.



WB analysis of SF2/SRSF1 using anti-SF2/...



IHC analysis of SF2/SRSF1 using anti-SF2/...



IHC analysis of SF2/SRSF1 using anti-SF2/...