

---

## Product Datasheet

### Superoxide Dismutase 1/SOD1 Antibody (orb251585)

**Description**

Superoxide Dismutase 1/SOD1 Antibody

**Species/Host**

Rabbit

**Reactivity**

Human, Mouse, Rat

**Conjugation**

Unconjugated

**Tested**

FC, ICC, IF, IHC, WB

**Applications**
**Immunogen**

A synthetic peptide corresponding to a sequence at the C-terminus of Human SOD1 (116-146aa RTLVVHEKADDLGKGGNEESTKTGNAGSRLA), different from the related mouse and rat sequences by two amino acids.

**Form/Appearance**

Lyophilized

**Concentration**

Adding 0.2 ml of distilled water will yield a concentration of 500 µg/ml.

**Storage**

Store at -20°C for one year from date of receipt. After reconstitution, at 4°C for one month. It can also be aliquotted and stored frozen at -20°C for six months. Avoid repeated freeze-thaw cycles.

**Note**

For research use only

**Application notes**

WB: The detection limit for SOD1 is approximately 0.1ng/lane under reducing conditions. Tested Species: In-house tested species with positive results. Other applications have not been tested. Optimal dilutions should be determined by end users. . Add 0.2ml of distilled water will yield a concentration of 500ug/ml.

**Isotype**

Rabbit IgG

**Clonality**

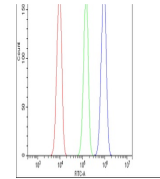
Polyclonal

**MW**

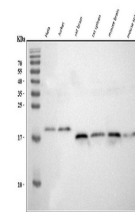
15936 MW

**Uniprot ID**
[P00441](#)
**Expiration Date**

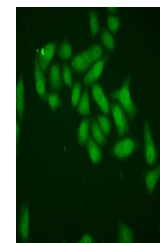
12 months from date of receipt.



Flow Cytometry analysis of A549 cells us...



WB analysis of SOD1 using anti-SOD1 anti...



IF analysis of SOD1 using anti-SOD1 anti...