
Product Datasheet

Vimentin Antibody (orb251542)

Description

Vimentin Antibody

Species/Host

Rabbit

Reactivity

Human, Mouse, Rat

Conjugation

Unconjugated

Tested Applications

IF, IHC, WB

Applications
Immunogen

A synthetic peptide corresponding to a sequence at the C-terminus of human Vimentin (435-466aa DTHSKRLLIKTVETRDGQVINETSQHHDDLE), identical to the related mouse and rat sequences.

Form/Appearance

Lyophilized

Concentration

Adding 0.2 ml of distilled water will yield a concentration of 500 µg/ml.

Storage

Store at -20°C for one year from date of receipt. After reconstitution, at 4°C for one month. It can also be aliquotted and stored frozen at -20°C for six months. Avoid repeated freeze-thaw cycles.

Note

For research use only

Application notes

WB: The detection limit for Vimentin is approximately 0.1ng/lane under reducing conditions. Tested Species: In-house tested species with positive results. By Heat: Boiling the paraffin sections in 10mM citrate buffer, pH6.0, for 20mins is required for the staining of formalin/paraffin sections. Other applications have not been tested. Optimal dilutions should be determined by end users. . Add 0.2ml of distilled water will yield a concentration of 500ug/ml.

Isotype

Rabbit IgG

Clonality

Polyclonal

MW

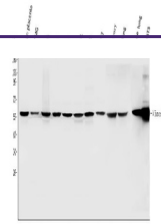
53652 MW

Uniprot ID
P08670
Dilution Range

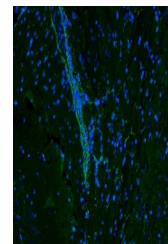
Immunohistochemistry (Paraffin-embedded Section), 0.5-1µg/ml, Human, Mouse, Rat, By Heat Western blot, 0.1-0.5µg/ml, Human, Mouse, Rat

Expiration Date

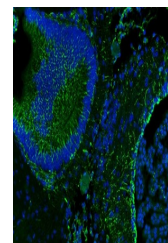
12 months from date of receipt.



WB: Lane
1: human
placenta
tissue;
2: human...



IF analysis of
Vimentin
using anti-
Vimen...



IF analysis of
Vimentin
using anti-
Vimen...