
Product Datasheet

PP2A-alpha/PPP2CA Antibody (orb251530)

Description

PP2A-alpha/PPP2CA Antibody

Species/Host

Rabbit

Reactivity

Human, Mouse, Rat

Conjugation

Unconjugated

Tested Applications

FC, ICC, IF, IHC, WB

Immunogen

E.coli-derived human PP2A-alpha recombinant protein (Position: M1-L309). Human PP2A-alpha shares 100% amino acid (aa) sequence identity with both mouse and rat PP2A-alpha.

Form/Appearance

Lyophilized

Concentration

Adding 0.2 ml of distilled water will yield a concentration of 500 µg/ml.

Storage

Store at -20°C for one year from date of receipt. After reconstitution, at 4°C for one month. It can also be aliquotted and stored frozen at -20°C for six months. Avoid repeated freeze-thaw cycles.

Note

For research use only

Application notes

WB: The detection limit for PP2A-alpha is approximately 0.1ng/lane under reducing conditions. Tested Species: In-house tested species with positive results. By Heat: Boiling the paraffin sections in 10mM citrate buffer, pH6.0, for 20mins is required for the staining of formalin/paraffin sections. Other applications have not been tested. Optimal dilutions should be determined by end users. . Add 0.2ml of distilled water will yield a concentration of 500ug/ml.

Isotype

Rabbit IgG

Clonality

Polyclonal

MW

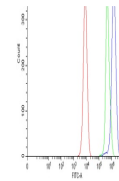
35594 MW

Uniprot ID
P67775
Dilution Range

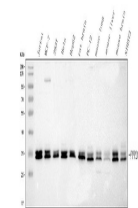
Immunohistochemistry (Paraffin-embedded Section), 0.5-1µg/ml, Human, Mouse, Rat, By HeatWestern blot, 0.1-0.5µg/ml, Human, Mouse, Rat

Expiration Date

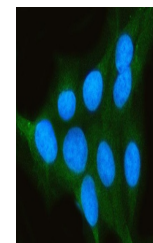
12 months from date of receipt.



Flow Cytometry analysis of K562 cells us...



WB analysis using anti-PPP2CA antibody.L...



IF analysis of PPP2CA using anti-PPP2CA ...