
Product Datasheet

Nucleophosmin/NPM1 Antibody (orb251524)

Description

Nucleophosmin/NPM1 Antibody

Species/Host

Rabbit

Reactivity

Human, Mouse, Rat

Conjugation

Unconjugated

Tested Applications

FC, ICC, IF, IHC, WB

Immunogen

E.coli-derived human Nucleophosmin recombinant protein (Position: M1-L294). Human Nucleophosmin shares 95% amino acid (aa) sequence identity with both mouse and rat Nucleophosmin.

Form/Appearance

Lyophilized

Concentration

Adding 0.2 ml of distilled water will yield a concentration of 500 µg/ml.

Storage

Store at -20°C for one year from date of receipt. After reconstitution, at 4°C for one month. It can also be aliquotted and stored frozen at -20°C for six months. Avoid repeated freeze-thaw cycles.

Note

For research use only

Application notes

WB: The detection limit for Nucleophosmin is approximately 0.1ng/lane under reducing conditions. Tested Species: In-house tested species with positive results. By Heat: Boiling the paraffin sections in 10mM citrate buffer, pH6.0, for 20mins is required for the staining of formalin/paraffin sections. Other applications have not been tested. Optimal dilutions should be determined by end users. . Add 0.2ml of distilled water will yield a concentration of 500ug/ml.

Isotype

Rabbit IgG

Clonality

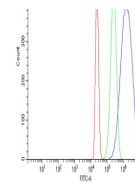
Polyclonal

MW

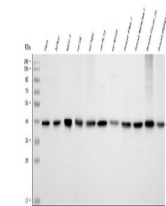
32575 MW

Uniprot ID
P06748
Expiration Date

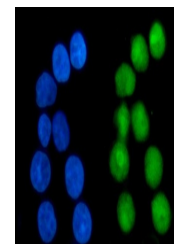
12 months from date of receipt.



Flow Cytometry analysis of HL-60 cells u...



WB:Lane 1:human HeLa cell;2:human Jurkat...



IF analysis of Nucleophosmin using anti-...