
Product Datasheet

Apolipoprotein E/APOE Antibody (orb251510)

Description

Apolipoprotein E/APOE Antibody

Species/Host

Rabbit

Reactivity

Human

Conjugation

Unconjugated

Tested Applications

ELISA, FC, IF, IHC, WB

Immunogen

E.coli-derived human Apolipoprotein E recombinant protein (Position: K19-H317). Human Apolipoprotein E shares 73% and 72% amino acid (aa) sequence identity with mouse and rat Apolipoprotein E, respectively.

Form/Appearance

Lyophilized

Concentration

Adding 0.2 ml of distilled water will yield a concentration of 500 µg/ml.

Storage

Store at -20°C for one year from date of receipt. After reconstitution, at 4°C for one month. It can also be aliquotted and stored frozen at -20°C for six months. Avoid repeated freeze-thaw cycles.

Note

For research use only

Application notes

WB: The detection limit for Apolipoprotein E is approximately 0.1ng/lane under reducing conditions. Tested Species: In-house tested species with positive results. By Heat: Boiling the paraffin sections in 10mM citrate buffer, pH6.0, for 20mins is required for the staining of formalin/paraffin sections. Other applications have not been tested. Optimal dilutions should be determined by end users. . Add 0.2ml of distilled water will yield a concentration of 500ug/ml.

Isotype

Rabbit IgG

Clonality

Polyclonal

MW

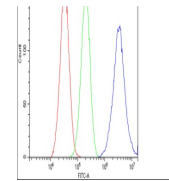
36154 MW

Uniprot ID
[P02649](https://www.uniprot.org/uniprot/P02649)
Dilution Range

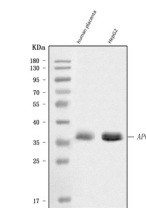
Western blot, 0.1-0.5µg/ml Immunohistochemistry (Paraffin-embedded Section), 0.5-1µg/ml, By Heat Immunohistochemistry (Frozen Section), 0.5-1µg/ml Flow Cytometry, 1-3µg/1x10⁶ cells ELISA (Cap), 1-5µg/ml

Expiration Date

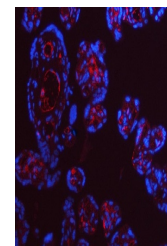
12 months from date of receipt.



Flow Cytometry analysis of HepG2 cells u...



WB analysis of Apolipoprotein E using an...



IF analysis of Apolipoprotein E using an...