
Product Datasheet

iNOS antibody (orb251481)

Description

iNOS antibody

Species/Host

Rabbit

Reactivity

Mouse, Rat

Conjugation

Unconjugated

Tested Applications

ELISA, ICC, IF, IHC-P

Immunogen

KLH conjugated synthetic peptide derived from human iNOS. Please contact us for the exact immunogen sequence. The peptide is available as orb374921.

Target

iNOS

Form/Appearance

10 mM PBS, 0.02% sodium azide

Concentration

- 100 µg (in 200 µl): 0.5 mg/ml- 200 µg (in 400 µl): 0.5 mg/ml

Storage

Store at 4°C for up to two weeks. For long term storage, aliquot and store at -20°C, avoid freeze/thaw cycles.

Note

For research use only

Isotype

IgG

Clonality

Polyclonal

Purity

Polyclonal antibodies are purified by peptide affinity chromatography

MW

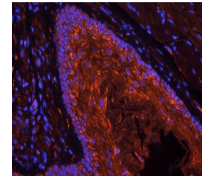
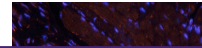
130 kDa

Uniprot ID
[P35228](#), [Q06518](#), [P29477](#)
NCBI
[31](#), [41](#), [000625](#), [000616](#)
Entrez
[4843](#)
Dilution Range

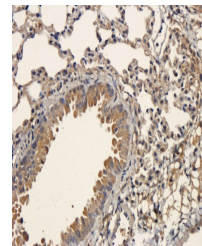
IHC-P: 1:200, IF/ICC: 1:200

Expiration Date

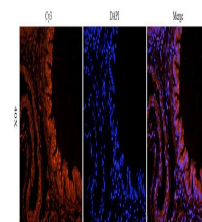
12 months from date of receipt.



IF image of mouse lung tissue using iNOS...



Immunohistochemical staining of paraffin...



IF analysis of mouse lung tissue using a...