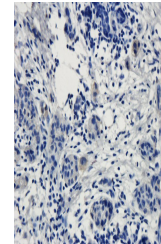


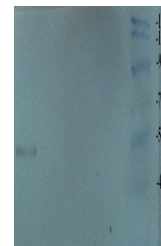
Product Datasheet

TRPV1 antibody (orb251480)

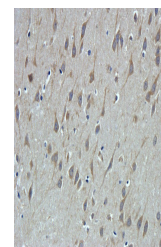
Description	TRPV1 antibody
Species/Host	Rabbit
Reactivity	Human, Mouse, Rat
Conjugation	Unconjugated
Tested Applications	ELISA, IHC-P, WB
Immunogen	KLH conjugated synthetic peptide derived from human TRPV1. Please contact us for the exact immunogen sequence. The peptide is available as orb374864.
Target	TRPV1
Form/Appearance	10 mM PBS, 0.02% sodium azide
Concentration	- 100 µg (in 200 µl): 0.5 mg/ml- 200 µg (in 400 µl): 0.5 mg/ml
Storage	Store at 4°C for up to two weeks. For long term storage, aliquot and store at -20°C, avoid freeze/thaw cycles.
Note	For research use only
Isotype	IgG
Clonality	Polyclonal
Purity	Polyclonal antibodies are purified by peptide affinity chromatography
MW	95 kDa
Uniprot ID	Q8NER1
Entrez	51393
Dilution Range	WB: 2 µg/ml, IHC-P: 1:100
Expiration Date	12 months from date of receipt.



IHC-P staining of human breast cancer ti...



WB analysis of Human breast cancer tissu...



IHC-P image of rat brain tissue using an...