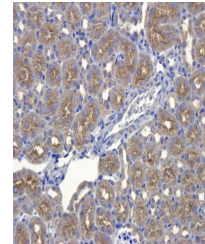


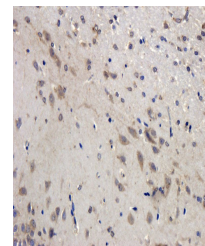
Product Datasheet

SDF1 antibody (orb251479)

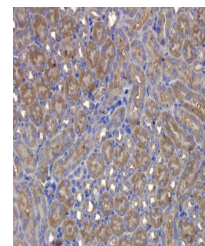
Description	SDF1 antibody
Species/Host	Rabbit
Reactivity	Canine, Gallus, Human, Mouse, Rat
Conjugation	Unconjugated
Tested Applications	ELISA, ICC, IF, IHC-P, WB
Immunogen	KLH conjugated synthetic peptide derived from human SDF1. Please contact us for the exact immunogen sequence. The peptide is available as orb374863.
Target	SDF1
Form/Appearance	10 mM PBS, 0.02% sodium azide
Concentration	- 100 µg (in 200 µl): 0.5 mg/ml- 200 µg (in 400 µl): 0.5 mg/ml
Storage	Store at 4°C for up to two weeks. For long term storage, aliquot and store at -20°C, avoid freeze/thaw cycles.
Note	For research use only
Isotype	IgG
Clonality	Polyclonal
Purity	Polyclonal antibodies are purified by peptide affinity chromatography
MW	8 kDa
Uniprot ID	P48061 , Q80YV8 , P40224
Entrez	6387
Dilution Range	WB: 1:200, IHC-P: 1:100, IF/ICC: 1:100
Expiration Date	12 months from date of receipt.



Immunohistochemical staining of mouse kidney tissue



Immunohistochemical staining of paraffin-embedded mouse kidney tissue



IHC-P image of mouse kidney tissue using SDF1 antibody