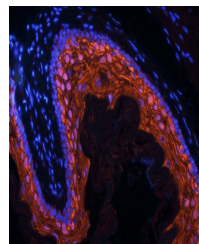


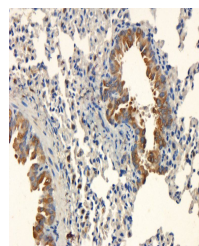
Product Datasheet

BMP2 antibody (orb251474)

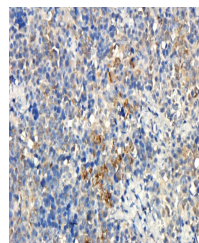
| | |
|----------------------------|--|
| Description | BMP2 antibody |
| Species/Host | Rabbit |
| Conjugation | Unconjugated |
| Tested Applications | ELISA, ICC, IF, IHC-P |
| Immunogen | KLH conjugated synthetic peptide derived from human BMP2. Please contact us for the exact immunogen sequence. The peptide is available as orb374858. |
| Target | BMP2 |
| Form/Appearance | 10 mM PBS, 0.02% sodium azide |
| Concentration | - 100 µg (in 200 µl): 0.5 mg/ml- 200 µg (in 400 µl): 0.5 mg/ml |
| Storage | Store at 4°C for up to two weeks. For long term storage, aliquot and store at -20°C, avoid freeze/thaw cycles. |
| Note | For research use only |
| Isotype | IgG |
| Clonality | Polyclonal |
| Purity | Polyclonal antibodies are purified by peptide affinity chromatography |
| MW | 13 kDa |
| Uniprot ID | P12643 , P21274 , P49001 |
| NCBI | 21 , 001200 , 001191 , 11 |
| Entrez | 650 |
| Dilution Range | WB: 1:200, IHC-P: 1:200, IF/ICC: 1:200 |
| Expiration Date | 12 months from date of receipt. |



IF analysis of mouse lung tissue using B...



Immunohistochemical staining of paraffin...



Immunohistochemical staining of rat sple...