
Product Datasheet

HMGCR (phospho-Ser872) antibody (orb251472)

Description

HMGR (phospho-Ser872) antibody

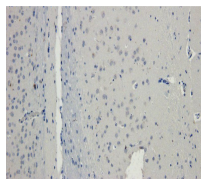


Species/Host

Rabbit

Reactivity

Bovine, Canine, Gallus, Human, Mouse, Porcine, Rat



Conjugation

Unconjugated

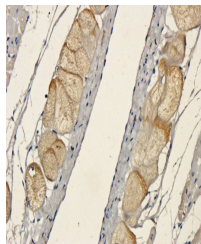
Tested Applications

IHC-P

Immunohistochemical staining of paraffin...

Immunogen

KLH conjugated synthetic peptide derived from human HMGR (phospho-Ser872). Please contact us for the exact immunogen sequence. The peptide is available as orb374856.



Target

HMGR (phospho-Ser872)

Form/Appearance

10 mM PBS, 0.02% sodium azide

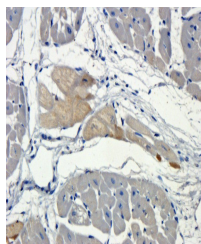
Concentration

- 100 µg (in 200 µl): 0.5 mg/ml- 200 µg (in 400 µl): 0.5 mg/ml

Immunohistochemical staining of paraffin...

Storage

Store at 4°C for up to two weeks. For long term storage, aliquot and store at -20°C, avoid freeze/thaw cycles.



Note

For research use only

Isotype

IgG

Clonality

Polyclonal

Immunohistochemical staining of paraffin...

Purity

Polyclonal antibodies are purified by peptide affinity chromatography

MW

97 kDa

Uniprot ID

[P04035](#), [Q09137](#), [Q5EG47](#)

NCBI

[11](#), [21](#), [000859](#), [000850](#)

Entrez

[3156](#)

Dilution Range

IHC-P: 1:30-100, WB: 1:200

Expiration Date

12 months from date of receipt.