
Product Datasheet

GCN2 (phospho-Thr898) antibody (orb251471)

Description

GCN2 (phospho-Thr898) antibody

Species/Host

Rabbit

Reactivity

Bovine, Canine, Equine, Human, Mouse, Porcine, Rat

Conjugation

Unconjugated

Tested Applications

ELISA, IHC-P

Immunogen

KLH conjugated synthetic peptide derived from human GCN2 (phospho-Thr898). Please contact us for the exact immunogen sequence. The peptide is available as orb374855.

Target

GCN2

Form/Appearance

10 mM PBS, 0.02% sodium azide

Concentration

- 100 µg (in 200 µl): 0.5 mg/ml- 200 µg (in 400 µl): 0.5 mg/ml

Storage

Store at 4°C for up to two weeks. For long term storage, aliquot and store at -20°C, avoid freeze/thaw cycles.

Note

For research use only

Isotype

IgG

Clonality

Polyclonal

Purity

Polyclonal antibodies are purified by peptide affinity chromatography

MW

189 kDa

Uniprot ID

[Q9QZ05](#), [Q9P2K8](#), [D4A7V9](#)

NCBI

[21](#), [001013725](#), [001013703](#)

Entrez

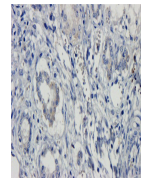
[440275](#)

Dilution Range

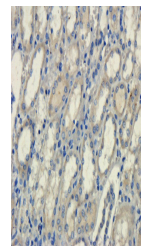
IHC-P: 1:50-200

Expiration Date

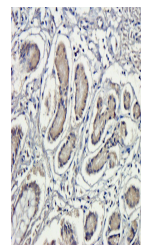
12 months from date of receipt.



IHC-P image of pig kidney tissue using a...



IHC-P image of pig kidney tissue using G...



IHC-P staining of pig stomach tissue usi...