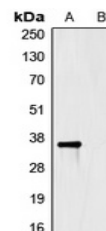


Product Datasheet

HSV-tag antibody (orb248961)

Description	Mouse monoclonal antibody to HSV-tag
Species/Host	Mouse
Conjugation	Unconjugated
Tested Applications	ELISA, WB
Immunogen	KLH-conjugated synthetic peptide CQPELAPEDPED.
Preservatives	Liquid in PBS, pH 7.3, 0.2% rAlbumin, and 0.02% sodium azide.
Form/Appearance	Liquid in PBS, pH 7.3, 0.2% rAlbumin, and 0.02% sodium azide.
Storage	Maintain refrigerated at 2-8°C for up to 2 weeks. For long term storage store at -20°C in small aliquots to prevent freeze-thaw cycles.
Note	For research use only
Clonality	Monoclonal
Source	Mouse
Dilution Range	WB: 1:500-1000
Expiration Date	12 months from date of receipt.



Western blot analysis of Anti-HSV-tag An...