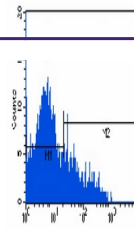

Product Datasheet

CTLA4 antibody (orb248891)

Description	Mouse monoclonal antibody to CTLA4
Species/Host	Mouse
Reactivity	Human
Conjugation	Unconjugated
Tested Applications	FC, IF
Immunogen	Native purified human CD152.
Target	CTLA4
Preservatives	Mouse IgG1 kappa. Liquid in PBS, pH 7.3, 0.2% rAlbumin, and 0.02% sodium azide.
Form/Appearance	Mouse IgG1 kappa. Liquid in PBS, pH 7.3, 0.2% rAlbumin, and 0.02% sodium azide.
Storage	Shipped at 4°C. Upon delivery aliquot and store at -20°C for one year. Avoid freeze/thaw cycles.
Note	For research use only
Application notes	1. Take 100 µl peripheral blood anticoagulated by EDTA and add to the bottom of 5 ml tube. 2. Add appropriate amount of antibody to the bottom of flow tube mixing with the whole blood; incubate for 30 minutes at room temperature. 3. Add 2 ml RBC lysis buffer; incubate for 10 minutes after mixing; dissolve red blood cells. 4. Sample tube is set to 1000 rpm centrifugation for 5 minutes; discard the supernatant. 5. Add 2 ml PBS wash buffer to resuspend the cells; then 1000 rpm centrifugation for 5 minutes; discard the supernatant. 6. Add appropriate amount of fluorescent-labeled anti-mouse IgGs and incubate for 20 minutes away from light at room temperature. 7. Add 2 ml PBS wash buffer to resuspend the cells; then 1000 rpm centrifugation for 5 minutes; discard the supernatant. 8. Add 0.5 ml PBS wash buffer to resuspend the cells and detect by flow cytometry (sample should be determined on the day on the machine and can also be added fixation overnight at 4 °C then measured).
Clonality	Monoclonal
Source	Mouse
Uniprot ID	P16410
Entrez	1493
Expiration Date	12 months from date of receipt.



Flow cytometric analysis of PBMC cells t...