
Product Datasheet

Nucleoli Marker Antibody (orb248680)

Description

This mAb is part of a panel of reagents which

h...

Species/Host

Mouse

Reactivity

Human

Conjugation

Unconjugated

Tested Applications

FACS, ICC, IF, IHC-P

Immunogen

Nuclei of myeloid leukemia biopsy cells were used as the immunogen.

Preservatives

0.2 mg/ml in 1X PBS with 0.1 mg/ml rAlbumin (US sourced) and 0.05% sodium azide

Storage

Store the Nucleoli Marker antibody at 2-8°C (with azide) or aliquot and store at -20°C or colder (without azide).

Note

For research use only

Application notes

The concentration stated for each application is a general starting point. Variations in protocols, secondaries and substrates may require the Nucleoli marker antibody to be titrated up or down for optimal performance.1. Staining of formalin-fixed tissues is enhanced by boiling tissue sections in 10mM Citrate Buffer, pH 6.0, for 10-20 min followed by cooling at RT for 20 minutes.2. The prediluted format is supplied in a dropper bottle and is optimized for use in IHC. After epitope retrieval step (if required), drip mAb solution onto the tissue section and incubate at RT for 30 min.

Formula

0.2 mg/ml in 1X PBS with 0.1 mg/ml BSA (US sourced) and 0.05% sodium azide

Isotype

Mouse IgG1, kappa

Clonality

Monoclonal

Purity

Protein G affinity chromatography

Hazard Information

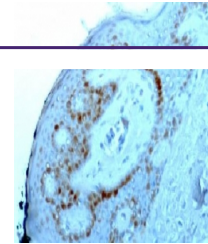
This Nucleoli Marker antibody is available for research use only.

Dilution Range

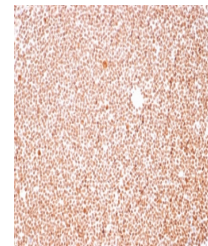
Flow cytometry: 1-2ug/million cells
,Immunofluorescence: 1-2ug/ml,Immunocytochemistry: 1-2ug/ml for 30 min at RT,Immunohistochemistry (FFPE): 1-2ug/ml for 30 min at RT

Expiration Date

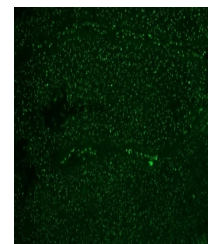
12 months from date of receipt.



IHC staining of FFPE human skin with Nuc...



IHC staining of FFPE human tonsil with N...



Immunofluorescent staining of FFPE colon...