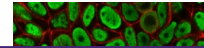

Product Datasheet

Human Nuclear Antigen Antibody (orb248661)

Description

This human nuclear antigen antibody is part of a


Species/Host

Mouse

Reactivity

Human

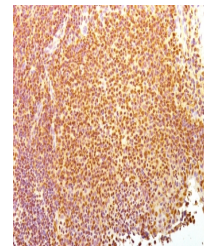
Conjugation

Unconjugated

Tested Applications

FACS, ICC, IF, IHC-Fr, IP

ICC staining of paraformaldehyde-fixed h...



IHC testing of acetone-fixed frozen huma...

Immunogen

Nuclei of human myeloid leukemia biopsy cells were used as the immunogen for this Nuclear Antigen antibody.

Preservatives

0.2 mg/ml in 1X PBS with 0.1 mg/ml rAlbumin (US sourced) and 0.05% sodium azide

Storage

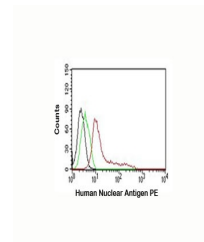
Store the Nuclear Antigen antibody at 2-8°C (with azide) or aliquot and store at -20°C or colder (without azide).

Note

For research use only

Application notes

The concentration stated for each application is a general starting point. Variations in protocols, secondaries and substrates may require the Nuclear Antigen antibody to be titrated up or down for optimal performance.



FACS testing of MCF-7 cells:
Black=no Ab...

Formula

0.2 mg/ml in 1X PBS with 0.1 mg/ml BSA (US sourced) and 0.05% sodium azide

Isotype

Mouse IgG1, kappa

Clonality

Monoclonal

Purity

Protein G affinity chromatography

Hazard Information

This Nuclear Antigen antibody is available for research use only.

Dilution Range

Flow cytometry: 1-2ug/million cells, Immunofluorescence: 1-2ug/ml, Immunoprecipitation: 1-2ug/500ug protein lysate, Immunocytochemistry (acetone-fixed cells): 1-2ug/ml for 30 min at RT, Immunohistochemistry (Frozen): 1-2ug/ml for 30 min at RT

Expiration Date

12 months from date of receipt.