
Product Datasheet

Hepatocyte Specific Antigen Antibody (orb248657)

Description

Hepatocyte Specific Antigen, also called Hepatocyte


Species/Host

Mouse

Reactivity

Human

Conjugation

Unconjugated

Tested Applications

IF, IHC-P

IHC staining of human hepatocellular carcinoma

Immunogen

Extract of a formalin-fixed, rejected-allograft of a human liver was used as the immunogen for this Hep Par 1 antibody.

Preservatives

0.2 mg/ml in 1X PBS with 0.1 mg/ml rAlbumin (US sourced) and 0.05% sodium azide

Storage

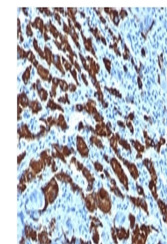
Store the Hep Par 1 antibody at 2-8°C (with azide) or aliquot and store at -20°C or colder (without azide).

Note

For research use only

Application notes

The concentration stated for each application is a general starting point. Variations in protocols, secondaries and substrates may require the Hep Par 1 antibody to be titered up or down for optimal performance.1. The prediluted format is supplied in a dropper bottle and is optimized for use in IHC. After epitope retrieval step (if required), drip mAb solution onto the tissue section and incubate at RT for 30 min.



IHC staining of human hepatocellular carcinoma

Formula

0.2 mg/ml in 1X PBS with 0.1 mg/ml BSA (US sourced) and 0.05% sodium azide

Isotype

Mouse IgG1, kappa

Clonality

Monoclonal

Purity

Protein G affinity

Hazard Information

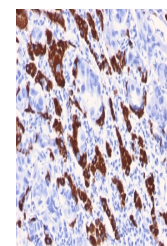
This Hep Par 1 antibody is available for research use only.

Dilution Range

Immunofluorescence: 0.5-1ug/ml, Immunohistochemistry (FFPE): 1-2ug/ml for 30 min at RT

Expiration Date

12 months from date of receipt.



IHC staining of human liver with Hep Par 1 antibody