
Product Datasheet

EBV Early Antigens Antibody (orb248645)

Description

Epstein-Barr virus (EBV), also designated human

Species/Host

Mouse

Reactivity

Virus

Conjugation

Unconjugated

Tested Applications

IF

Immunogen

Affinity purified early antigen polypeptides from induced Raji cells precipitated with African Burkitt's lymphoma sera were used as the immunogen for this Early Antigens antibody.

Preservatives

0.2 mg/ml in 1X PBS with 0.1 mg/ml rAlbumin (US sourced) and 0.05% sodium azide

Storage

Store the EBV Early Antigens antibody at 2-8°C (with azide) or aliquot and store at -20°C or colder (without azide).

Note

For research use only

Application notes

The concentration stated for each application is a general starting point. Variations in protocols, secondaries and substrates may require the Early Antigens antibody to be titered up or down for optimal performance.

Formula

0.2 mg/ml in 1X PBS with 0.1 mg/ml BSA (US sourced) and 0.05% sodium azide

Isotype

Mouse IgG1, kappa

Clonality

Monoclonal

Purity

Protein G purified antibody

Hazard Information

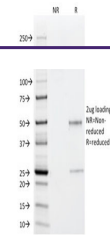
This EBV Early Antigens antibody is available for research use only.

Dilution Range

Immunofluorescence: 0.5-1ug/ml

Expiration Date

12 months from date of receipt.



SDS-PAGE analysis of purified, BSA-free ...