
Product Datasheet

**Cytokeratin Antibody, Multi 4/5/6/8/10/13/18
(orb248639)**

Description

This antibody recognizes multi cytokeratins: 4, 5,


Species/Host

Mouse

Reactivity

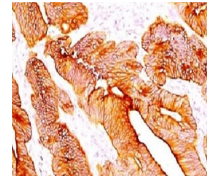
Human, Mouse, Rat

Conjugation

Unconjugated

Tested Applications

FACS, IF, IHC-P, WB



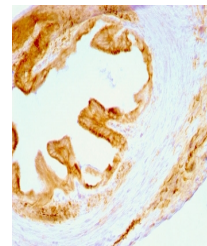
IHC testing of FFPE human colon carcinom...

Immunogen

A keratin-enriched preparation from cultured human A431 was used as the immunogen for this Multi Cytokeratin antibody.

Preservatives

0.2 mg/ml in 1X PBS with 0.1 mg/ml rAlbumin (US sourced) and 0.05% sodium azide



IHC testing of FFPE rat oviduct and Mult...

Storage

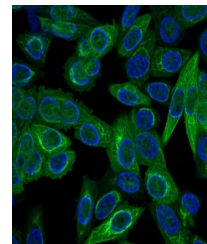
Store the Multi Cytokeratin antibody at 2-8°C (with azide) or aliquot and store at -20°C or colder (without azide).

Note

For research use only

Application notes

The concentration stated for each application is a general starting point. Variations in protocols, secondaries and substrates may require the Multi Cytokeratin antibody to be titrated up or down for optimal performance.1. Staining of formalin-fixed tissues requires boiling tissue sections in pH 9 10mM Tris with 1mM EDTA for 10-20 min followed by cooling at RT for 20 minutes.2. The prediluted format is supplied in a dropper bottle and is optimized for use in IHC. After epitope retrieval step (if required), drip mAb solution onto the tissue section and incubate at RT for 30 min.



Immunofluorescent staining of permeabili...

Formula

0.2 mg/ml in 1X PBS with 0.1 mg/ml BSA (US sourced) and 0.05% sodium azide

Isotype

Mouse IgG1, kappa

Clonality

Monoclonal

Purity

Protein G affinity chromatography

Hazard Information

This Multi Cytokeratin antibody is available for research use only.

Entrez

[4](#), [3853](#), [3856](#), [8](#), [10](#), [3851](#), [3858](#), [18](#), [3875](#), [5](#), [3860](#), [13](#), [3852](#), [6](#)

Dilution Range

Flow cytometry: 1-2ug/million cells, Immunofluorescence: 1-4ug/ml, Western blot: 1-2ug/ml, Immunohistochemistry (FFPE): 1-2ug/ml