
Product Datasheet

Actin Antibody (pan muscle) (orb248619)

Description

This antibody recognizes actin of skeletal, cardiac,


Species/Host

Mouse

Reactivity

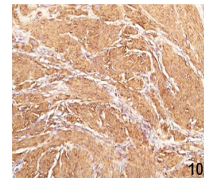
Human, Mouse

Conjugation

Unconjugated

Tested Applications

IHC-P, WB



IHC staining of human leiomyosarcoma (10...

Immunogen

SDS extract of human myocardium was used as the immunogen for this Muscle Actin HHF35 antibody.

Preservatives

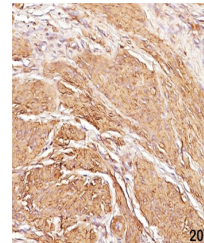
0.2 mg/ml in 1X PBS with 0.1 mg/ml rAlbumin (US sourced) and 0.05% sodium azide

Storage

Store the Muscle Actin antibody at 2-8°C (with azide) or aliquot and store at -20°C or colder (without azide).

Note

For research use only



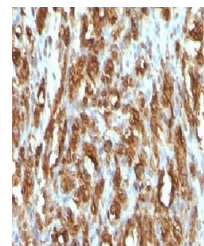
IHC staining of human leiomyosarcoma (20...

Application notes

The concentration stated for each application is a general starting point. Variations in protocols, secondaries and substrates may require the Muscle actin HHF35 antibody to be titrated up or down for optimal performance.1. No special pretreatment is required for the IHC staining of formalin-fixed, paraffin-embedded tissues.2. The prediluted format is supplied in a dropper bottle and is optimized for use in IHC. After epitope retrieval step (if required), drip mAb solution onto the tissue section and incubate at RT for 30 min.

Formula

0.2 mg/ml in 1X PBS with 0.1 mg/ml BSA (US sourced) and 0.05% sodium azide



IHC testing of FFPE rhabdomyosarcoma wit...

Isotype

Mouse IgG1, kappa

Clonality

Monoclonal

Purity

Protein G affinity chromatography

Uniprot ID

P62736, P68032, P68133

Hazard Information

This Muscle Actin antibody is available for research use only.

Entrez

58, 59, 70

Dilution Range

Western blot: 1-2ug/ml, Immunohistochemistry (FFPE): 0.25-0.5ug/ml for 30 min at RT

Expiration Date

12 months from date of receipt.