
Product Datasheet

Estrogen Inducible Protein pS2 / TFF1 Antibody (orb248549)

Description

This antibody recognizes a polypeptide of ~6.5kDa,


Species/Host

Mouse

Reactivity

Human

Conjugation

Unconjugated

Tested Applications

IHC-P

IHC staining of human breast cancer with...

Immunogen

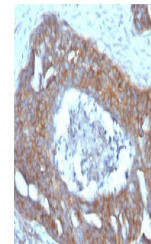
Amino acids CFDDTVRGVPWCFYPNTIDVPPEEECEF (57-84) from the C-terminus of human Estrogen Inducible Protein pS2 was used as the immunogen for this antibody.

Preservatives

0.2 mg/ml in 1X PBS with 0.1 mg/ml rAlbumin (US sourced) and 0.05% sodium azide

Storage

Store the Estrogen Inducible Protein pS2 antibody at 2-8°C (with azide) or aliquot and store at -20°C or colder (without azide).


Note

For research use only

IHC testing of FFPE human ovarian carcin...

Application notes

The concentration stated for each application is a general starting point. Variations in protocols, secondaries and substrates may require the Estrogen Inducible Protein pS2 antibody to be titered up or down for optimal performance.1. Staining of FFPE tissues REQUIRES digestion with Pronase E at 1mg/ml in PBS for 15 min at 37°C. Heat Induced Epitope Retrieval is not suitable for this antibody.2. The prediluted format is supplied in a dropper bottle and is optimized for use in IHC. After epitope retrieval step (if required), drip mAb solution onto the tissue section and incubate at RT for 30 min.

Formula

0.2 mg/ml in 1X PBS with 0.1 mg/ml BSA (US sourced) and 0.05% sodium azide

SDS-PAGE Analysis of Purified, BSA-Free ...

Isotype

Mouse IgG1, kappa

Clonality

Monoclonal

Purity

Protein G affinity chromatography

Hazard Information

This Estrogen Inducible Protein pS2 antibody is available for research use only.

Entrez

7031

Dilution Range

Immunohistochemistry (FFPE): 0.5-1ug/ml for 30 min at RT

