

---

## Product Datasheet

### SUMO2/3 Antibody (orb248545)

**Description**

This antibody reacts with both SUMO2 and SUMO3. The


**Species/Host**

Mouse

**Reactivity**

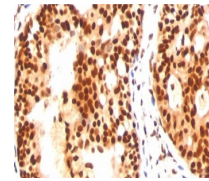
Human

**Conjugation**

Unconjugated

**Tested Applications**

FACS, IF, IHC-P, WB



IHC staining of FFPE human tonsil with S...

**Immunogen**

Recombinant human SUMO2 protein was used as the immunogen for this SUMO2/3 antibody.

**Preservatives**

0.2 mg/ml in 1X PBS with 0.1 mg/ml rAlbumin (US sourced) and 0.05% sodium azide

**Storage**

Store the SUMO2/3 antibody at 2-8°C (with azide) or aliquot and store at -20°C or colder (without azide).

**Note**

For research use only

**Application notes**

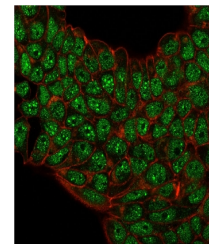
The concentration stated for each application is a general starting point. Variations in protocols, secondaries and substrates may require the SUMO2/3 antibody to be titrated up or down for optimal performance.1. Staining of formalin-fixed tissues requires boiling tissue sections in pH 9 10mM Tris with 1mM EDTA for 10-20 min followed by cooling at RT for 20 minutes.2. The prediluted format is supplied in a dropper bottle and is optimized for use in IHC. After epitope retrieval step (if required), drip mAb solution onto the tissue section and incubate at RT for 30 min.



Western blot testing of human HeLa cell ...

**Formula**

0.2 mg/ml in 1X PBS with 0.1 mg/ml BSA (US sourced) and 0.05% sodium azide



Immunofluorescent testing of PFA-fixed h...

**Isotype**

Mouse IgG1, kappa

**Clonality**

Monoclonal

**Purity**

Protein G purified

**Uniprot ID**

**P55854**

**Hazard Information**

This SUMO2/3 antibody is available for research use only.

**Entrez**

**6613**

**Dilution Range**

Flow cytometry: 1-2ug/million cells,Immunofluorescence: 1-2ug/ml,Western blot: 1-2ug/ml,Immunohistochemistry (FFPE): 1-2ug/ml for 30 min at RT (1) (2)

**Expiration Date**

12 months from date of receipt.