

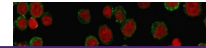
---

## Product Datasheet

### CD45RA Antibody (Leukocyte marker) (orb248519)

**Description**

This antibody recognizes a protein of 205kDa-


**Species/Host**

human l...

Mouse

**Reactivity**

Human

**Conjugation**

Unconjugated

**Tested Applications**

FACS, IF, IHC-P, WB

Immunofluorescent staining of PFA-fixed ...

**Immunogen**

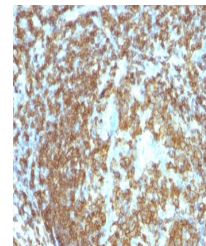
Stimulated human leukocytes were used as the immunogen for this CD45RA antibody.

**Preservatives**

0.2 mg/ml in 1X PBS with 0.1 mg/ml rAlbumin (US sourced) and 0.05% sodium azide

**Storage**

Store the CD45RA antibody at 2-8°C (with azide) or aliquot and store at -20°C or colder (without azide).



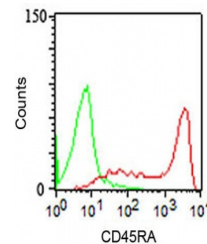
IHC staining of FFPE human tonsil with C...

**Note**

For research use only

**Application notes**

The concentration stated for each application is a general starting point. Variations in protocols, secondaries and substrates may require the CD45RA antibody to be titrated up or down for optimal performance.1. The prediluted format is supplied in a dropper bottle and is optimized for use in IHC. After epitope retrieval step (if required), drip mAb solution onto the tissue section and incubate at RT for 30 min.



FACS surface staining of human PBMCs usi...

**Formula**

0.2 mg/ml in 1X PBS with 0.1 mg/ml BSA (US sourced) and 0.05% sodium azide

**Isotype**

Mouse IgG2a, kappa

**Clonality**

Monoclonal

**Purity**

Protein G affinity chromatography

**Hazard Information**

This CD45RA antibody is available for research use only.

**Entrez**

**5788**

**Dilution Range**

Flow cytometry: 0.5-1ug/million cells, Immunofluorescence: 1-2ug/ml, Western blot: 1-2ug/ml, Immunohistochemistry (FFPE): 0.5-1ug/ml for 30 min at RT

**Expiration Date**

12 months from date of receipt.