
Product Datasheet

Ornithine Decarboxylase Antibody / ODC1 (orb248486)

Description

This antibody recognizes a 53kDa protein, identified


Species/Host

Mouse

Reactivity

Human, Mouse, Rat

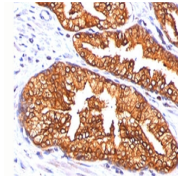
Conjugation

Unconjugated

Tested Applications

FACS, IF, IHC-P, WB

Formalin/paraffin human prostate carcinoma...


Immunogen

Recombinant human ODC-1 protein was used as the immunogen for this antibody.

Preservatives

0.2 mg/ml in 1X PBS with 0.1 mg/ml rAlbumin (US sourced) and 0.05% sodium azide

Storage

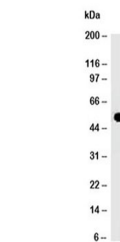
Store the ODC-1 antibody at 2-8°C (with azide) or aliquot and store at -20°C or colder (without azide).

Note

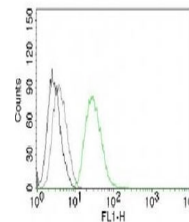
For research use only

Application notes

The concentration stated for each application is a general starting point. Variations in protocols, secondaries and substrates may require the antibody to be titrated up or down for optimal performance.1. Staining of formalin-fixed tissues requires boiling tissue sections in pH 9 10mM Tris with 1mM EDTA for 10-20 min followed by cooling at RT for 20 minutes.2. The prediluted format is supplied in a dropper bottle and is optimized for use in IHC. After epitope retrieval step (if required), drip mAb solution onto the tissue section and incubate at RT for 30 min.



Western blot testing of human placenta I...



Flow analysis of permeabilized PC3 cells ...

Formula

0.2 mg/ml in 1X PBS with 0.1 mg/ml BSA (US sourced) and 0.05% sodium azide

Isotype

Mouse IgG1, kappa

Clonality

Monoclonal

Purity

Protein G affinity chromatography

Hazard Information

This ODC-1 antibody is available for research use only.

Entrez

4953

Dilution Range

Flow cytometry: 1-2ug/million cells, Immunofluorescence: 1-2ug/ml, Western blot: 1-2ug/ml, Immunohistochemistry (FFPE): 0.25-0.5ug/ml for 30 min at RT (1) (2)

Expiration Date

12 months from date of receipt.