
Product Datasheet

Neurofilament Antibody (-Heavy) / NF-H / NEFH (orb248482)

Description

This antibody reacts with a 200kDa protein, identified


Species/Host

Mouse

Reactivity

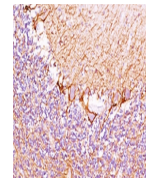
Human, Mouse, Rat

Conjugation

Unconjugated

Tested Applications

IHC-P, WB



IHC testing of cerebellum stained with N...

Immunogen

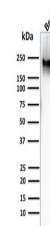
The triton-X 100 insoluble protein fraction of rat brain was used as the immunogen for this Neurofilament Heavy antibody.

Preservatives

0.2 mg/ml in 1X PBS with 0.1 mg/ml rAlbumin (US sourced) and 0.05% sodium azide

Storage

Store the Neurofilament Heavy antibody at 2-8°C (with azide) or aliquot and store at -20°C or colder (without azide).



Western blot testing of human brain lysa...

Note

For research use only

Application notes

The concentration stated for each application is a general starting point. Variations in protocols, secondaries and substrates may require the antibody to be titrated up or down for optimal performance.1. Staining of formalin-fixed tissues requires boiling tissue sections in 10mM citrate buffer, pH 6.0, for 10-20 min followed by cooling at RT for 20 minutes.2. The prediluted format is supplied in a dropper bottle and is optimized for use in IHC. After epitope retrieval step (if required), drip mAb solution onto the tissue section and incubate at RT for 30 min.

Formula

0.2 mg/ml in 1X PBS with 0.1 mg/ml BSA (US sourced) and 0.05% sodium azide

Isotype

Mouse IgG1, kappa

Clonality

Monoclonal

Purity

Protein G affinity chromatography

Hazard Information

This Neurofilament Heavy antibody is available for research use only.

Entrez

[4744](#)

Dilution Range

Western blot: 1-2ug/ml, Immunohistochemistry (FFPE): 0.25-0.5ug/ml for 30 min at RT

Expiration Date

12 months from date of receipt.