

---

## Product Datasheet

**Neurofilament Antibody (-Heavy) / NF-H / NEFH  
(orb248480)**

**Description**

Neurofilaments make up the main structural elements


**Species/Host**

Mouse

**Reactivity**

Human, Mouse, Rat

**Conjugation**

Unconjugated

**Tested Applications**

FACS, IF, IHC-P, WB

**Immunogen**

Human recombinant Neurofilament protein was used as the immunogen. (1)

**Preservatives**

0.2 mg/ml in 1X PBS with 0.1 mg/ml rAlbumin (US sourced) and 0.05% sodium azide

**Storage**

Store the Neurofilament antibody at 2-8°C (with azide) or aliquot and store at -20°C or colder (without azide).

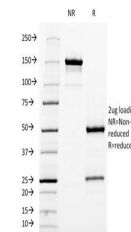
**Note**

For research use only

**Application notes**

The usable concentrations in the Applications Details are suggestions only. The use of different protocols/secondaries/substrates may require the Neurofilament antibody to be titrated for optimal performance. 1. The NF421 antibody is specific to the heavy subunit. 2. FFPE tissues requires boiling tissue sections in 10mM citrate buffer, pH 6.0, for 10-20 min followed by cooling at RT for 20 minutes. 3. The prediluted format is supplied in a dropper bottle and is optimized for use in IHC. After epitope retrieval step (if required), drip mAb solution onto the tissue section and incubate at RT for 30 min.

IHC testing of FFPE human cerebellum wit...



SDS-PAGE Analysis of Purified, BSA-Free ...



Western blot testing of human brain lysa...

**Formula**

0.2 mg/ml in 1X PBS with 0.1 mg/ml BSA (US sourced) and 0.05% sodium azide

**Isotype**

Mouse IgG1, kappa

**Clonality**

Monoclonal

**Purity**

Protein G purified Neurofilament antibody

**Hazard Information**

This Neurofilament antibody is available for research use only.

**Entrez**
[4744](#)
**Dilution Range**

Western blot: 1-2ug/ml, Flow cytometry: 0.5-1ug/million cells, Immunofluorescence: 1-2ug/ml, Immunohistochemistry (FFPE): 0.25-0.5ug/ml for 30 min at RT

**Expiration Date**

12 months from date of receipt.