
Product Datasheet

Myogenin Antibody / MYOG (orb248476)

Description

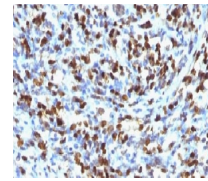
Myogenin is a member of the MyoD family of



fact...

Species/Host

Mouse


Reactivity

Human, Mouse, Rat

IHC testing of FFPE rhabdomyosarcoma stained with Myogenin antibody.

Conjugation

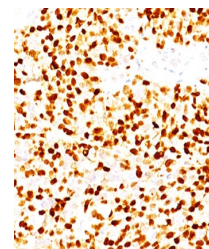
Unconjugated

Tested Applications

IHC-P

Immunogen

Human myogenin recombinant protein was used as the immunogen for this antibody.



IHC testing of FFPE rhabdomyosarcoma stained with Myogenin antibody.

Preservatives

0.2 mg/ml in 1X PBS with 0.1 mg/ml rAlbumin (US sourced) and 0.05% sodium azide

Storage

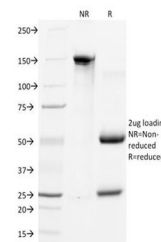
Store the Myogenin antibody at 2-8°C (with azide) or aliquot and store at -20°C or colder (without azide).

Note

For research use only

Application notes

The concentration stated for each application is a general starting point. Variations in protocols, secondaries and substrates may require the Myogenin antibody to be titrated up or down for optimal performance. 1. Staining of formalin-fixed tissues requires boiling tissue sections in 10mM citrate buffer, pH 6.0, for 10-20 min followed by cooling at RT for 20 minutes. 2. The prediluted format is supplied in a dropper bottle and is optimized for use in IHC. After epitope retrieval step (if required), drip mAb solution onto the tissue section and incubate at RT for 30 min.



SDS-PAGE Analysis of Purified, BSA-Free ...

Formula

0.2 mg/ml in 1X PBS with 0.1 mg/ml BSA (US sourced) and 0.05% sodium azide

Isotype

Mouse IgG1, kappa

Clonality

Monoclonal

Purity

Protein G affinity chromatography

Uniprot ID

[P15173](#)

Hazard Information

This Myogenin antibody is available for research use only.

Entrez

[4656](#)

Dilution Range

Immunohistochemistry (FFPE): 1-2ug/ml for 30 min at RT