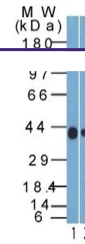

Product Datasheet

KRT19 Antibody / Cytokeratin 19 (orb248454)

Description

This antibody is specific to the rod domain of human



Western blot testing of human 1) HepG2 a...

Species/Host

Mouse

Reactivity

Human

Conjugation

Unconjugated

Tested Applications

IF, IHC-P, WB

Immunogen

Human breast cancer MCF-7 cells were used as the immunogen for this Cytokeratin 19 antibody.

Preservatives

0.2 mg/ml in 1X PBS with 0.1 mg/ml rAlbumin (US sourced) and 0.05% sodium azide

Storage

Store the Cytokeratin 19 antibody at 2-8°C (with azide) or aliquot and store at -20°C or colder (without azide).

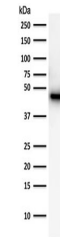
Note

For research use only

Application notes

The concentration stated for each application is a general starting point. Variations in protocols, secondaries and substrates may require the Cytokeratin 19 antibody to be titrated up or down for optimal performance.1. Staining of formalin-fixed tissues requires boiling tissue sections in 10mM Citrate Buffer, pH 6.0, for 10-20 min followed by cooling at RT for 20 minutes.2. The prediluted format is supplied in a dropper bottle and is optimized for use in IHC. After epitope retrieval step (if required), drip mAb solution onto the tissue section and incubate at RT for 30 min.

Western blot testing of human PC3 cell l...


Formula

0.2 mg/ml in 1X PBS with 0.1 mg/ml BSA (US sourced) and 0.05% sodium azide

Isotype

Mouse IgG2a, lambda

Clonality

Monoclonal

Purity

Protein G affinity chromatography

Hazard Information

This Cytokeratin 19 antibody is available for research use only.

Entrez

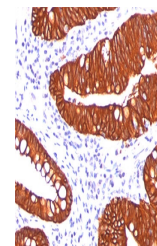
3880

Dilution Range

Western blot: 1-2ug/ml, Immunofluorescence: 1-2ug/ml, Immunohistochemistry (FFPE): 1-2ug/ml for 30 min at RT

Expiration Date

12 months from date of receipt.



IHC testing of FFPE human colon carcinom...