

---

## Product Datasheet

### Cytokeratin 17 Antibody (orb248448)

**Description**

Cytokeratin 17 (CK17, Keratin 17) is a member of the


**Species/Host**

Mouse

**Reactivity**

Human, Rat

**Conjugation**

Unconjugated

**Tested Applications**

FACS, IF, IHC-P, WB

IHC staining of FFPE human cervical carc...

**Immunogen**

The cytoskeletal fraction of rat colon epithelium was used as the immunogen for this Cytokeratin 17 antibody.

**Preservatives**

0.2 mg/ml in 1X PBS with 0.1 mg/ml rAlbumin (US sourced) and 0.05% sodium azide

**Storage**

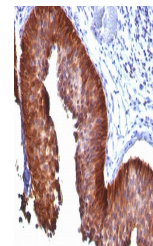
Store the Cytokeratin 17 antibody at 2-8°C (with azide) or aliquot and store at -20°C or colder (without azide).

**Note**

For research use only

**Application notes**

The concentration stated for each application is a general starting point. Variations in protocols, secondaries and substrates may require the antibody to be titered up or down for optimal performance.> 1. Staining of formalin-fixed tissues requires boiling tissue sections in pH 9 10mM Tris with 1mM EDTA for 10-20 min followed by cooling at RT for 20 minutes.2. The prediluted format is supplied in a dropper bottle and is optimized for use in IHC. After epitope retrieval step (if required), drip mAb solution onto the tissue section and incubate at RT for 30 min.



IHC staining of FFPE human bladder carci...

**Formula**

0.2 mg/ml in 1X PBS with 0.1 mg/ml BSA (US sourced) and 0.05% sodium azide

**Isotype**

Mouse IgG2b, kappa

**Clonality**

Monoclonal

**Purity**

Protein G affinity chromatography

**Hazard Information**

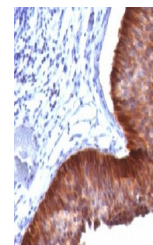
This Cytokeratin 17 antibody is available for research use only.

**Entrez**

[3872](#)

**Dilution Range**

Flow cytometry: 1-2ug/million cells,Immunofluorescence: 1-2ug/ml,Western blot: 1-2ug/ml,Immunohistochemistry (Frozen & FFPE): 1-2ug/ml for 30 min at RT



IHC staining of FFPE human bladder carci...

**Expiration Date**

12 months from date of receipt.