

---

## Product Datasheet

**Cytokeratin 14 Antibody / CK14 / KRT14  
(orb248446)**

**Description**

Cytokeratin 14 (CK14) belongs to the type I (or A or

**Species/Host**

Mouse

**Reactivity**

Human, Mouse, Rat

**Conjugation**

Unconjugated

**Tested Applications**

FACS, IF, IHC-P

**Immunogen**

A synthetic peptide of 15 amino acid from the C-terminus of human Cytokeratin 14 was used as the immunogen.

**Preservatives**

0.2 mg/ml in 1X PBS with 0.1 mg/ml rAlbumin (US sourced) and 0.05% sodium azide

**Storage**

Store the Cytokeratin 14 antibody at 2-8°C (with azide) or aliquot and store at -20°C or colder (without azide).

**Note**

For research use only

**Application notes**

The concentration stated for each application is a general starting point. Variations in protocols, secondaries and substrates may require the antibody to be titrated up or down for optimal performance.1. Staining of formalin-fixed tissues requires boiling tissue sections in 10mM Citrate Buffer, pH 6.0, for 10-20 min followed by cooling at RT for 20 minutes.2. The prediluted format is supplied in a dropper bottle and is optimized for use in IHC. After epitope retrieval step (if required), drip mAb solution onto the tissue section and incubate at RT for 30 min.

**Formula**

0.2 mg/ml in 1X PBS with 0.1 mg/ml BSA (US sourced) and 0.05% sodium azide

**Isotype**

Mouse IgG3, kappa

**Clonality**

Monoclonal

**Purity**

Protein G affinity chromatography

**Hazard Information**

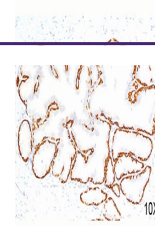
This Cytokeratin 14 antibody is available for research use only.

**Entrez**

[3861](#)

**Dilution Range**

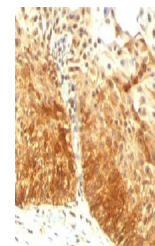
Flow cytometry: 1-2ug/million cells, Immunofluorescence: 1-2ug/ml, Immunohistochemistry (FFPE): 0.5-1ug/ml for 30 min at RT



IHC testing of human prostate (10X) stai...



IHC testing of human prostate (20X) stai...



IHC testing of FFPE human prostate with ...