

---

## Product Datasheet

### KRT10 Antibody / Cytokeratin 10 (orb248444)

**Description**

This antibody recognizes a protein of 56.5kDa, identified

**Species/Host**

Mouse

**Reactivity**

Human, Mouse

**Conjugation**

Unconjugated

**Tested Applications**

IHC-P, WB

**Immunogen**

Skin extract from a human psoriasis patient was used as the immunogen for this Cytokeratin 10 antibody.

**Preservatives**

0.2 mg/ml in 1X PBS with 0.1 mg/ml rAlbumin (US sourced) and 0.05% sodium azide

**Storage**

Store the Cytokeratin 10 antibody at 2-8°C (with azide) or aliquot and store at -20°C or colder (without azide).

**Note**

For research use only

**Application notes**

The concentration stated for each application is a general starting point. Variations in protocols, secondaries and substrates may require the antibody to be titrated up or down for optimal performance.1. Staining of formalin-fixed tissues requires boiling tissue sections in 1mM EDTA, pH 8-9, for 10-20 min followed by cooling at RT for 20 minutes.2. The prediluted format is supplied in a dropper bottle and is optimized for use in IHC. After epitope retrieval step (if required), drip mAb solution onto the tissue section and incubate at RT for 30 min.

**Formula**

0.2 mg/ml in 1X PBS with 0.1 mg/ml BSA (US sourced) and 0.05% sodium azide

**Isotype**

Mouse IgG1, kappa

**Clonality**

Monoclonal

**Purity**

Protein G affinity chromatography

**Hazard Information**

This Cytokeratin 10 antibody is available for research use only.

**Entrez**

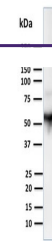
**3858**

**Dilution Range**

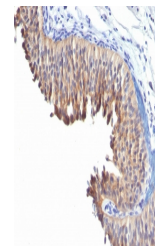
Western blot: 1-2ug/ml, Immunohistochemistry (FFPE): 0.5-1ug/ml for 30 min at RT

**Expiration Date**

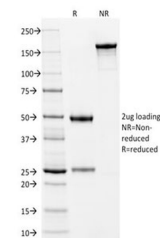
12 months from date of receipt.



Western blot testing of human thymus lys...



IHC testing of human bladder carcinoma W...



SDS-PAGE analysis of purified, BSA-free ...